

# Measure V Bond Program Update

La Mesa – Spring Valley Schools

Presentation to the Citizens' Bond Oversight Committee

August 14, 2024

Dr. Robert Cochran, Executive Director, Business Services

Mark Claussen, P.E., Bond Program Manager



# Program Update Overview

- **Current Project Status**
- **Upcoming Activities**
- **Financial Summary**
- **Schedule Summary**
- **Local Labor Participation**



# Bundle B Construction

- Casa de Oro Substantially Complete
- Spring Valley Academy Substantially Complete
- Highlands Elementary Substantially Complete
- Loma Elementary Substantially Complete
- Sweetwater Springs Elementary Substantially Complete
- Murdock Elementary Substantially Complete
- Operations Center Improvements Substantially Complete

# Bundle D Construction

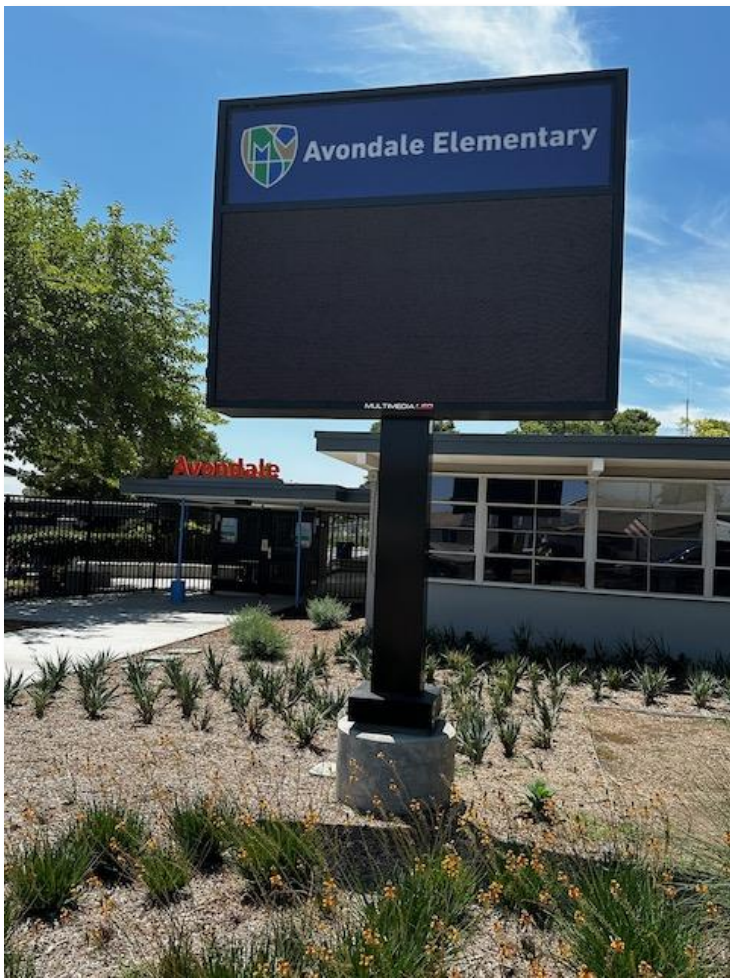
- Avondale Construction Started
- Bancroft Construction Started
- Kempton Construction Started
- La Presa Construction Started
- Rancho Construction Started
- STEAM Hydronic Piping Complete



STEAM



# Bundle D Work-in-Progress Avondale





# Bundle D Work-in-Progress Bancroft



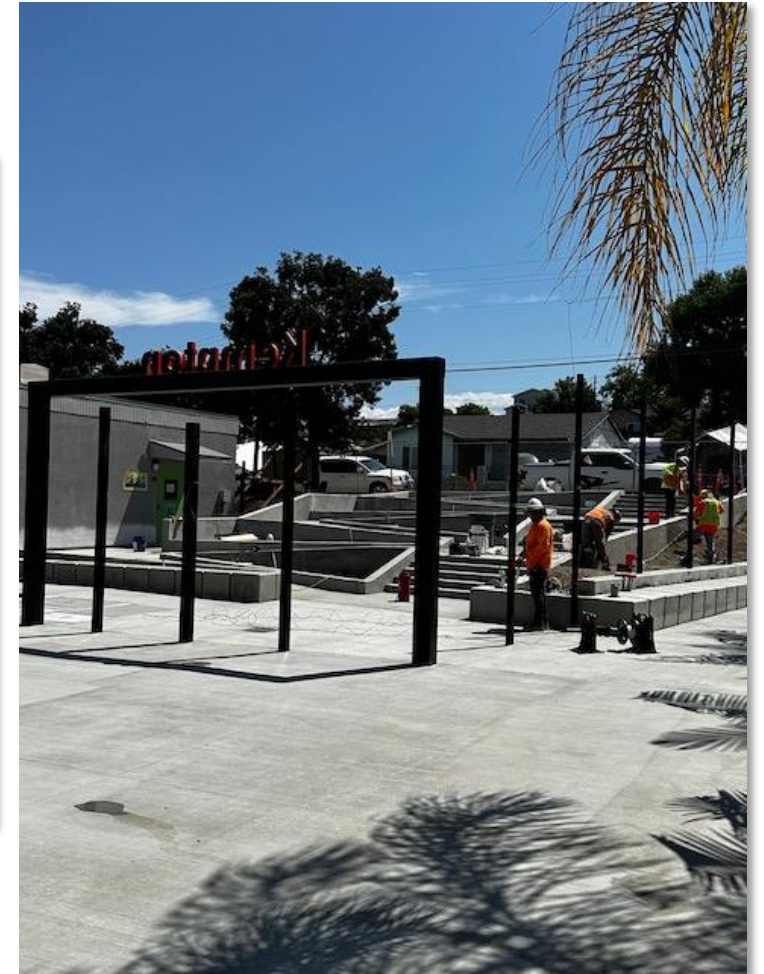




# Bundle D Work-in-Progress Kempton

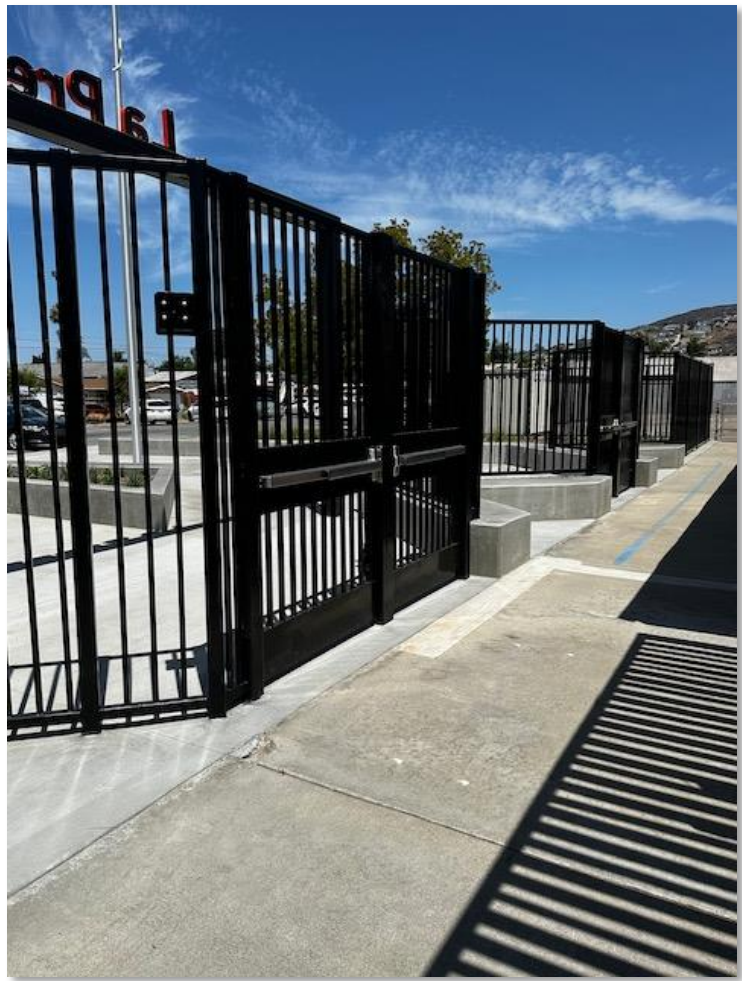


Security and Safety  
Entrance Improvements





# Bundle D Work-in-Progress La Presa





# Bundle D Work-in-Progress Rancho





# Bundle D Work-in-Progress STEAM







# Bundle C Construction

- LMAAC Construction 95% Complete
- La Mesa Dale Construction 98% Complete
- Rolando Construction 55% Complete
- Lemon Avenue Construction Start Fall 2024
- Maryland Avenue Construction Start Fall 2024

# Bundle C Work-in-Progress LMAAC



- Underground Utilities Relocation
- New Fencing





# Bundle C Work-in-Progress La Mesa Dale





# Bundle C Work-in-Progress Rolando







# Bundle E Construction

- Parkway Construction In Progress
- Fletcher Hills Construction in Progress
- Northmont Construction in Progress
- Murray Manor Construction Start Fall 2024

# Bundle E Work-in-Progress Parkway Portables 10



June 25



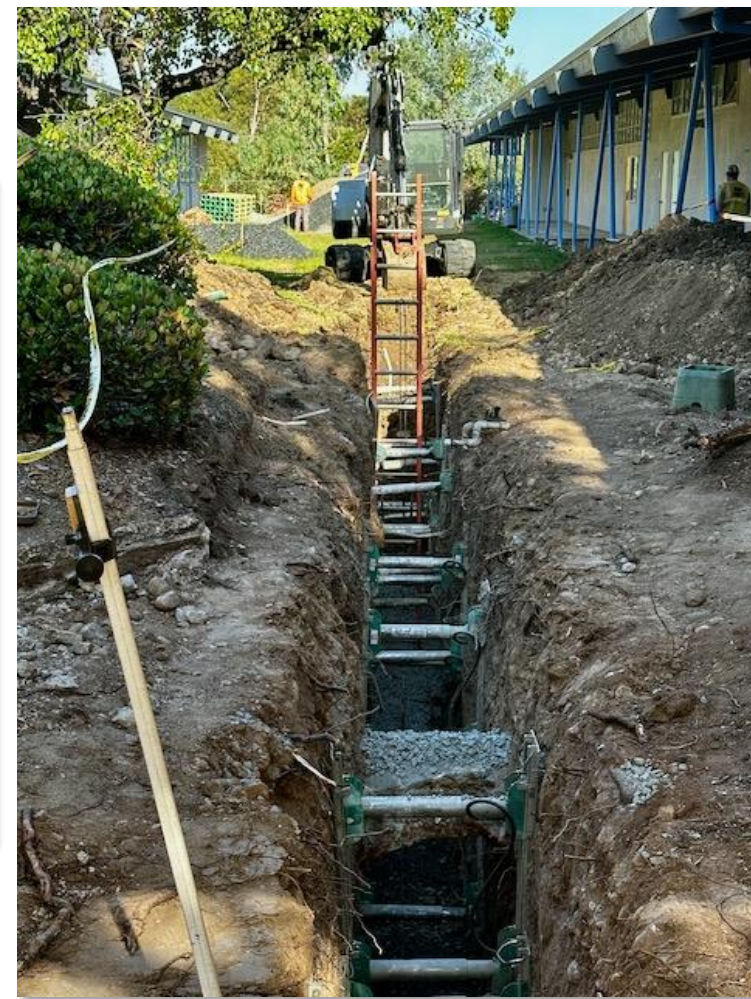
July 25



August 6



# Bundle E Work-in-Progress Parkway





# Bundle E Work-in-Progress Parkway



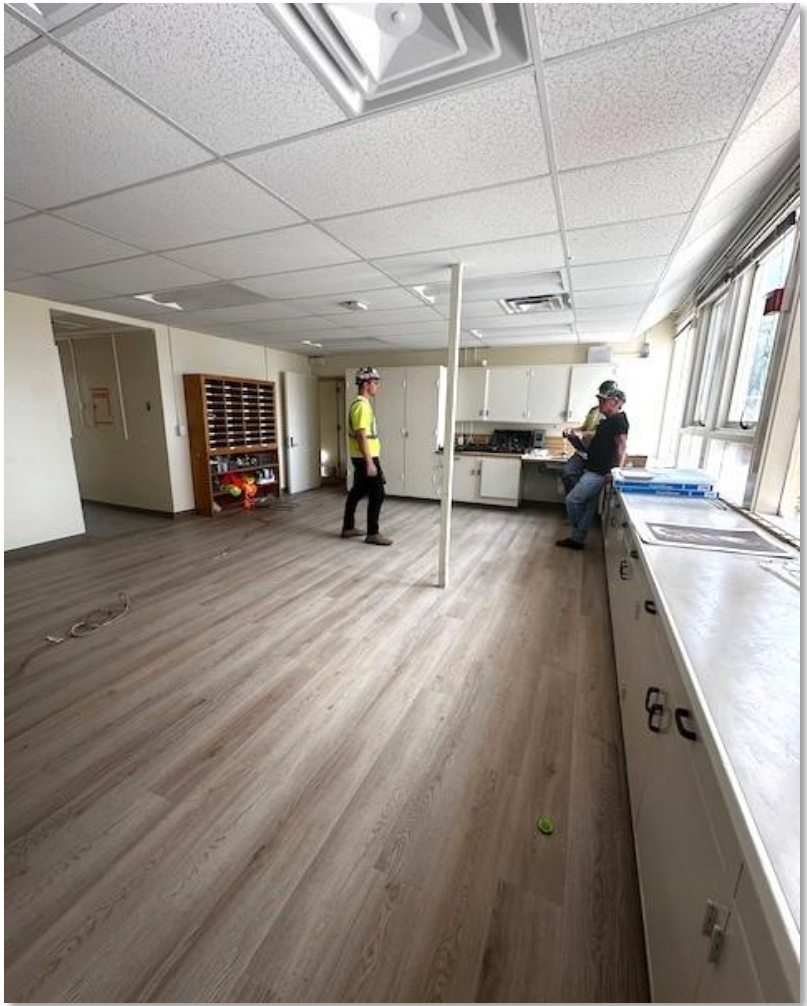


# Bundle E Work-in-Progress Fletcher Hills





# Bundle E Work-in-Progress Fletcher Hills





# Bundle E Work-in-Progress Northmont





# Bundle E Work-in-Progress Northmont





# Upcoming Activities

- Bundle B
  - Complete Punch Lists and Project Closeouts
- Bundle D
  - Continue Construction All Sites
- Bundle C
  - Complete LMAAC Summer Utility Work and Fencing
  - Construction Start Lemon Ave and Maryland Ave
  - Continue Las Mesa Dale Construction (New Admin Building)
- Bundle E
  - Construction Start Murray Manor
- Playground/Shade Improvement Starts
- STEAM Upper Field Construction Documents
- Education Center Planning Continuing



# Program Revenue Summary

Fund 21 Revenue			
<b>General Obligation Bonds</b>			
August 2021	Actual	48,000,000.00	General Obligation Bonds, Series A
September 2023	Actual	50,000,000.00	General Obligation Bonds, Series B
August 2024	Pending	38,000,000.00	General Obligation Bonds, Series C
<b>Total</b>		<b>136,000,000.00</b>	*Cost of Issuance is expensed in Common Costs
<b>Earned Interest</b>			
June 2022	Actual	235,372.61	FY 21/22 Earned Interest
October 2022	Actual	75,865.64	Q1 FY 22/23 Earned Interest
December 2022	Actual	59,068.40	Q1 FY 22/23 Earned Interest
February 2023	Actual	53,810.48	Q2 FY 22/23 Earned Interest
April 2022	Actual	141,251.95	Q2 FY 22/23 Earned Interest
April 2023	Actual	38,167.08	Q3 FY 22/23 Earned Interest
June 2023	Actual	210,987.68	Q3 FY 22/23 Earned Interest
June 2023	Actual	88,508.95	Q4 FY 22/23 Earned Interest
June 2023	Actual	146,003.72	Q4 FY 22/23 Earned Interest
June 2023	Actual	15,438.62	Q4 FY 22/23 Earned Interest
October 2023	Actual	33,461.56	Q1 FY 23/24 Earned Interest
December 2023	Actual	272,137.92	Q1 FY 23/24 Earned Interest
January 2024	Actual	97,618.00	Q1 FY 23/24 Earned Interest
January 2024	Actual	68,518.54	Q2 FY 23/24 Earned Interest
March 2024	Actual	406,688.35	Q2 FY 23/24 Earned Interest
April 2024	Actual	193,829.42	Q2 FY 23/24 Earned Interest
April 2024	Actual	24,692.45	Q3 FY 23/24 Earned Interest
<b>Interest Since last adoption</b>		<b>1,096,946.24</b>	
<b>Total Interest To Date</b>		<b>2,161,421.37</b>	
<b>Current Revenue</b>		<b>138,161,421.37</b>	

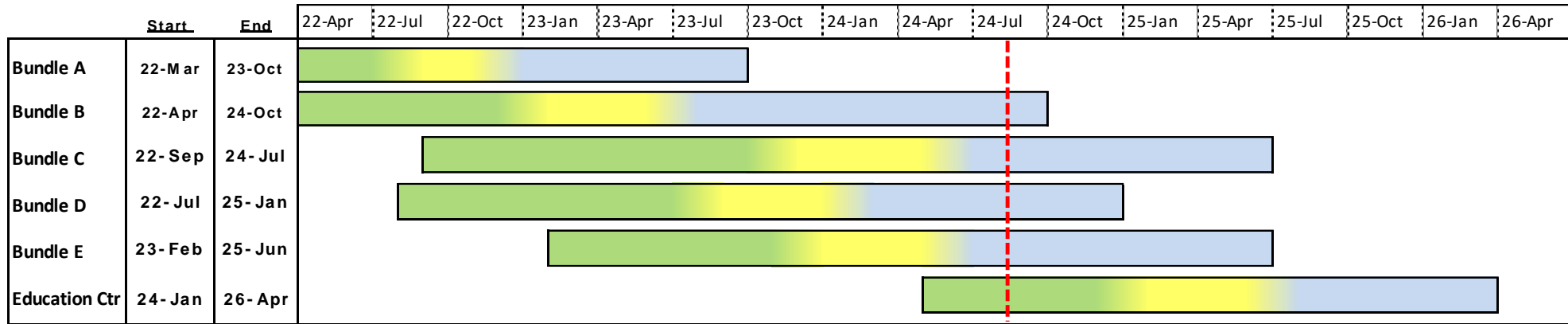


# Current Program Financial Summary

Project Name	Original Budget	Current Budget	Budget Changes	Committed Costs	Expenditures	Remaining Budget	% Committed
<b>Elementary Schools</b>							
Avondale Site Improvements	\$2,640,853.53	\$2,168,977.60	(\$471,875.93)	\$2,105,724.65	\$1,679,292.21	\$63,252.95	97.08%
Bancroft Site Improvements	\$1,893,596.29	\$2,497,829.16	\$604,232.87	\$2,417,538.98	\$1,422,657.02	\$80,290.18	96.79%
Casa de Oro Site Improvements	\$4,121,685.39	\$3,904,236.87	(\$217,448.52)	\$3,748,497.20	\$3,456,673.94	\$155,739.67	96.01%
Fletcher Hills Elementary School	\$4,142,269.06	\$4,815,479.86	\$673,210.80	\$4,114,600.24	\$224,331.34	\$700,879.62	85.45%
Highlands Elementary Site Improvements	\$1,602,953.80	\$1,871,531.58	\$268,577.78	\$1,682,471.82	\$1,532,879.69	\$189,059.76	89.90%
Kempton Site Improvements	\$2,676,367.30	\$2,902,162.12	\$225,794.82	\$2,843,263.42	\$748,135.05	\$58,898.70	97.97%
La Mesa Dale Site Improvements	\$8,497,137.87	\$10,153,280.07	\$1,656,142.20	\$8,161,202.32	\$906,482.59	\$1,992,077.75	80.38%
La Presa Site Improvements	\$4,987,447.34	\$4,122,808.71	(\$864,638.63)	\$3,804,510.93	\$1,647,606.63	\$318,297.78	92.28%
Lemon Avenue Site Improvements	\$1,751,735.70	\$2,146,141.21	\$394,405.51	\$236,373.76	\$170,584.47	\$1,909,767.45	11.01%
Loma Elementary Site Improvements	\$782,071.17	\$1,251,804.75	\$469,733.58	\$1,219,361.10	\$1,093,639.36	\$32,443.65	97.41%
Maryland Avenue Site Improvements	\$1,584,913.59	\$1,669,319.10	\$84,405.51	\$224,968.15	\$169,893.21	\$1,444,350.95	13.48%
Murdock Site Improvements	\$1,659,839.77	\$2,653,103.81	\$993,264.04	\$2,325,489.25	\$2,141,744.88	\$327,614.56	87.65%
Murray Manor Site Improvements	\$2,273,753.02	\$3,273,753.02	\$1,000,000.00	\$270,292.47	\$134,707.64	\$3,003,460.55	8.26%
Northmont Site Improvements	\$5,408,296.52	\$4,751,170.54	(\$657,125.98)	\$4,292,696.36	\$324,641.31	\$458,474.18	90.35%
Rancho Site Improvements	\$2,001,411.81	\$2,136,350.66	\$134,938.85	\$2,056,625.43	\$1,579,327.11	\$79,725.23	96.27%
Rolando Site Improvements	\$2,755,932.66	\$4,430,338.17	\$1,674,405.51	\$3,809,172.35	\$233,573.02	\$621,165.82	85.98%
Sweetwater Springs Site Improvements	\$5,629,939.77	\$2,778,261.57	(\$2,851,678.20)	\$2,516,921.97	\$2,255,020.63	\$261,339.60	90.59%
<b>Middle Schools</b>							
Parkway Middle School Entrance Modernizations	\$628,359.69	\$708,585.50	\$80,225.81	\$663,049.00	\$663,049.00	\$45,536.50	93.57%
Parkway Middle School Improvements	\$16,669,083.19	\$15,307,398.74	(\$1,361,684.45)	\$2,077,577.83	\$1,409,547.41	\$13,229,820.91	13.57%
La Mesa Arts Academy Entrance Modernizations	\$628,359.70	\$1,080,735.50	\$452,375.80	\$1,033,357.82	\$1,033,357.82	\$47,377.68	95.62%
La Mesa Arts Academy Site Improvements	\$5,568,238.99	\$3,889,258.38	(\$1,678,980.61)	\$3,156,506.53	\$1,218,782.66	\$732,751.85	81.16%
Spring Valley Academy Entrance Modernizations	\$628,359.69	\$818,873.50	\$190,513.81	\$753,819.37	\$753,819.38	\$65,054.13	92.06%
Spring Valley Academy Site Improvements	\$3,389,591.21	\$3,249,384.21	(\$140,207.00)	\$3,011,145.37	\$2,646,590.40	\$238,238.84	92.67%
STEAM Academy Entrance Modernizations	\$628,359.69	\$1,487,264.50	\$858,904.81	\$1,455,781.37	\$1,455,781.37	\$31,483.13	97.88%
STEAM Academy Site Improvements	\$4,621,369.51	\$5,655,411.53	\$1,034,042.02	\$5,522,635.02	\$1,357,654.13	\$132,776.51	97.65%
<b>Other District Sites</b>							
STEAM Slope Stabilization	\$6,606,524.75	\$6,560,840.70	(\$45,684.05)	\$2,372,097.00	\$2,359,674.25	\$4,188,743.70	36.16%
<b>Infrastructure Repairs - Districtwide</b>	\$6,443,178.98	\$1,589,574.98	(\$4,853,604.00)	\$0.00	\$0.00	\$1,589,574.98	0.00%
Playground Improvements		\$4,853,604.00	\$4,853,604.00	\$1,490,400.53	\$567,545.47	\$3,363,203.47	30.71%
Energy Efficiency Projects - Districtwide	\$10,371,056.42	\$10,371,056.42	\$0.00	\$10,371,056.42	\$10,371,056.42	\$0.00	100.00%
Security Fencing		\$832,540.63	\$832,540.63	\$773,621.86	\$773,389.36	\$58,918.77	92.92%
<b>Operations Center</b>							
Operations Center Trailer Demolition	\$65,252.63	\$150,732.64	\$85,480.01	\$150,732.64	\$150,732.64	\$0.00	100.00%
Portable Building	\$329,545.99	\$92,655.75	(\$236,890.24)	\$92,655.75	\$92,655.75	\$0.00	100.00%
Operations Center Site Improvements	\$1,908,207.11	\$2,814,767.78	\$906,560.67	\$2,764,996.36	\$2,099,789.61	\$49,771.42	98.23%
<b>Education Service Center</b>							
Education Center Site Improvements	\$6,248,616.17	\$6,248,616.17	\$0.00	\$8,250.00	\$0.00	\$6,240,366.17	0.13%
<b>Program Common Costs &amp; Contingencies</b>							
Program Administration	\$9,855,691.69	\$7,560,922.64	\$0.00	\$4,567,501.25	\$3,078,014.52	\$2,993,421.39	60.41%
Program Contingency	\$3,000,000.00	\$3,362,649.00	\$362,649.00	\$0.00	\$0.00	\$3,362,649.00	0.00%
Program Reserve	\$4,000,000.00	\$4,000,000.00	\$0.00	\$0.00	\$0.00	\$4,000,000.00	0.00%
<b>Program Totals</b>	<b>\$136,000,000.00</b>	<b>\$138,161,421.37</b>	<b>\$2,161,421.37</b>	<b>\$86,094,894.52</b>	<b>\$49,752,630.29</b>	<b>\$52,066,526.85</b>	<b>62.31%</b>



# Schedule



Design
  DSA & Bidding Award
  Construction & Closeout
  Current Date



# Local Labor Participation (BBC)

Company	City	County	Bundle A	Bundle B & Ops Center	Total
Casper Company	Spring Valley	San Diego County		525,000	525,000
Brady Company	La Mesa	San Diego County	1,070,268	787,000	1,857,268
ACCO Engineered Systems	San Diego	San Diego County		1,650,000	1,650,000
Western Rim	Escondido	San Diego County	750,000	2,300,000	3,050,000
Inline Fence & Rail Company	Lakeside	San Diego County		2,150,000	2,150,000
FenceCorp	Oceanside	San Diego County		830,000	830,000
Pierre Landscaping	San Diego	San Diego County	255,000	390,000	645,000
South Bay Fence	Chula Vista	San Diego County	60,000		60,000
Kirk Paving	Lakeside	San Diego County		472,000	472,000
Ace Electric	San Diego	San Diego County		290,000	290,000
Precision Electric	Lakeside	San Diego County	210,000	564,000	774,000
Elite Earthworks	Murietta	Out of County	1,800,000		1,800,000

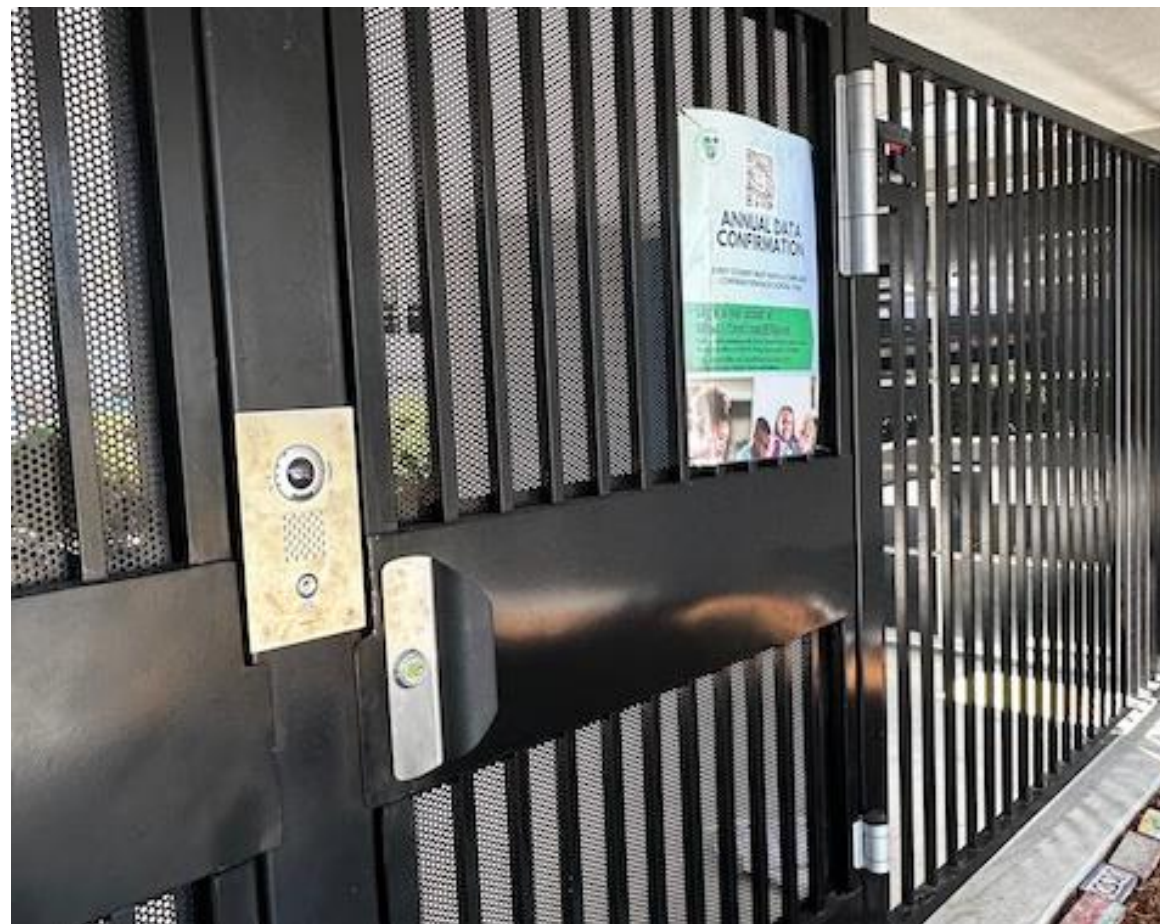
# Local Labor Participation (Lusardi)

Company	City	County	Bundle D	Bundle E
A Good Roofer, Inc. (Lakeside, CA)	Lakeside	San Diego		204,553
Ace Electric, Inc. (San Diego, CA)	San Diego	San Diego	651,635	1,999,926
Adair Striping, Inc. (Vista, CA)	Vista	San Diego		10,153
Brady West, Inc. (So CA & Central CA)	La Mesa	San Diego	105,500	975,787
Brian Cox Mechanical, Inc. BCM (So Cal (no LA))	Poway	San Diego	2,417,016	637,927
Buxcon Sheetmetal, Inc. (So Cal)	Santee	San Diego		160,200
Cement Cutting, Inc. (SD, Riverside & Imperial Counties)	San Diego	San Diego	703,428	1,151,683
Centex Glazing, Inc. (La Mesa, CA)	La Mesa	San Diego		307,241
Comprehensive Glass Works (Santee, CA)	Santee	San Diego		15,768
Construction Cleaning Services, Inc. (Bonita, CA)	Bonita	San Diego		33,077
D and D Concrete Construction, Inc. (Poway, CA)	Poway	San Diego		1,367,762
Demcon Concrete Contractors, Inc. (Poway, CA)	Poway	San Diego		281,949
FenceCorp, Inc. (So Cal)	Oceanside	San Diego		1,141,778
Hearthland Acoustics and Interiors of California, Inc. (Carlsbad, CA)	Lakeside	San Diego		19,080
HSCC, Inc.	Lakeside	San Diego	1,711,564	
Johnston Tractor, Inc. (SD County)	Alpine	San Diego	431,840	482,989
Kier & Wright Civil Engineers & Surveyors, Inc. (NorCal, SoCal)	Livermore	Alameda		55,911
Kyne Construction, Inc. (El Cajon, CA)	El Cajon	San Diego		1,697,017
MC Painting aka MC Contracting (Oceanside, CA)	Oceanside	San Diego	158,765	253,762
New Dimension Masonry, Inc. (SD, OC, Rlv., San Bern, Vent., Imp Counties)	San Diego	San Diego	159,244	60,405
Nicholas De Graaf dba Pacific Flagpole Service (San Diego, CA)	San Diego	San Diego	61,995	33,055
OFS Flooring, LP (So Cal)	San Diego	San Diego		185,946
Pacific Coast Cleaning, Inc. (So Cal)	El Cajon	San Diego		8,051
Park West Rescom (So Cal)	Rancho Santa Margarita	Orange		581,557
Pierre Landscape	Irwindale	Los Angeles	717,608	
Premier Sign Service, Inc. (Riverside, CA)	Riverside	Riverside	318,040	148,870
RAP Engineering, Inc. (San Diego ONLY)	San Marcos	San Diego	195,548	386,464
Rocky Coast Builders, Inc. (Escondido, CA)	Escondido	San Diego		600,995
Sherwood Mechanical, Inc. (So Cal)	San Diego	San Diego		402,396
Southwest Construction Services, Inc. (Lakeside, CA)	Lakeside	San Diego		24,988
Spooners Woodworks, Inc. (So Cal)	Poway	San Diego		81,625
Strelic Plumbing Inc. DBA Advance Plumbing Company	El Cajon	San Diego	521,240	
Sylvester Roofing Company, Inc.	Escondido	San Diego	17,000	
Systems Waterproofing, Inc. (So Cal)	Orange	Orange		51,499
Team West Contracting Corporation	Corona	Riverside	2,018,975	
Vorwaller & Brooks Inc. (Poway)	Poway	San Diego		167,490
West Coast Iron, Inc. WCI (Spring Valley, CA)	Spring Valley	San Diego	445,744	472,968
Western Sign & Awning (San Marcos, CA)	San Marcos	San Diego	83,910	76,569
XYZ Consulting, Inc. (So Cal)	San Diego	San Diego	121,500	56,173



# Measure V Safety Improvements

- Signage and Wayfinding
- Exterior Lighting Additions
- Student Dropoff Traffic Flow Improvements
- Security Gates / Fencing and Controlled Access Points
- New Admin Buildings (2) at School Entrance (Controlled Access)





Questions.....