

Measure V

Bond Program Update

La Mesa – Spring Valley Schools

Presentation to the Citizens' Bond Oversight Committee

May 15, 2024

Dr. Robert Cochran, Executive Director, Business Services and Chief Safety Officer

Mark Claussen, P.E., Bond Program Manager



Program Update Overview

- **Current Project Status**
- **Upcoming Activities**
- **Financial Summary**
- **Schedule Summary**
- **Local Labor Participation**

Bundle B Construction

Project Site	Status
Casa de Oro	Substantially Complete
Spring Valley Academy	Substantially Complete
Highlands Elementary	Substantially Complete
Loma Elementary	Substantially Complete
Sweetwater Springs Elementary	Substantially Complete
Murdock Elementary	Substantially Complete
Operations Center Improvements	Complete June 2024

Bundle B Site Improvements

Before



After



Spring Valley Academy

Bundle B Site Improvements

Before



After



Loma

Bundle B Site Improvements



Casa de Oro Elementary



Highlands Elementary

Bundle B Murdock Elementary



Murdock Elementary HVAC Improvements



New Cooling Tower Enclosure

Plant Operational on Schedule



New Cooling Tower

Playground Improvements Typical

Before



After



Highlands Elementary

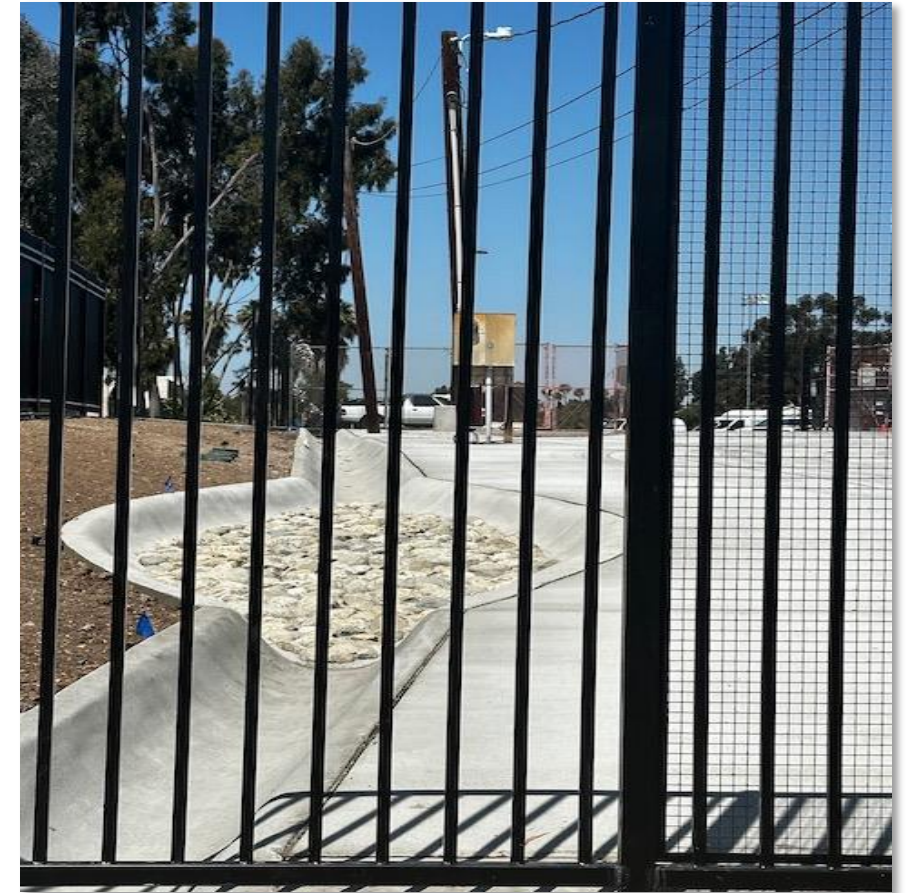


Operations Center Site Improvements



Slope Improvements

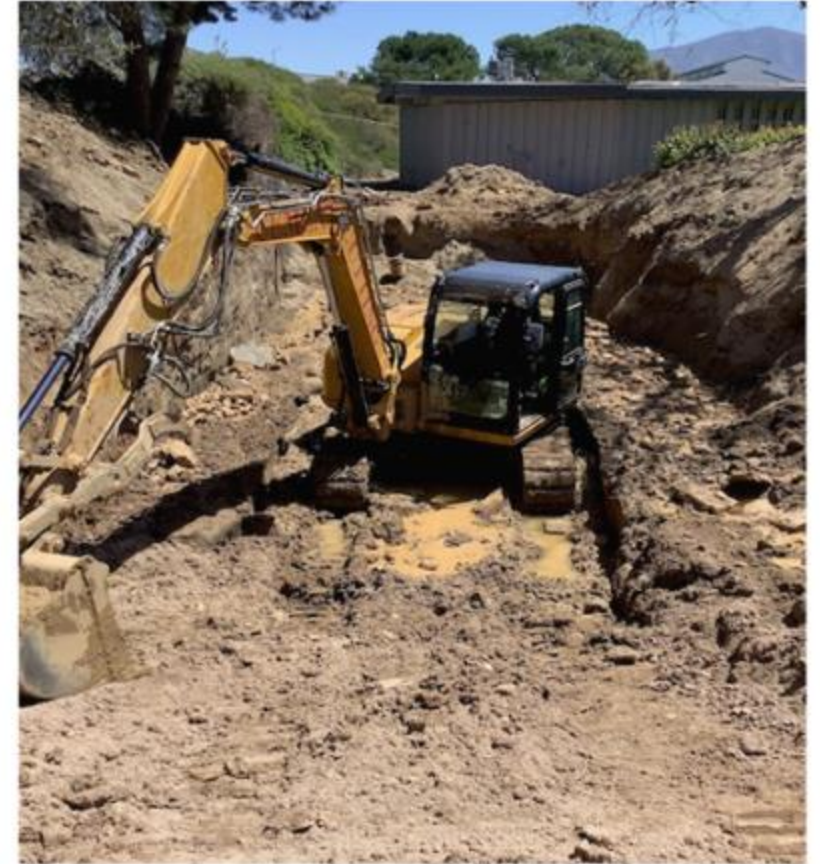
Site Security



Circulation and Drainage Improvements

Bundle D Construction

Project Site	Status
Avondale	Construction Started
Bancroft	Construction Started
Kempton	Construction Started
La Presa	Construction Started
Rancho	Construction Started
STEAM	Excavation Completed



STEAM



Bundle D Work-in-Progress

Avondale



La Presa



Bancroft



Rancho



Bundle C Construction

Project Site	Status
LMAAC	Construction Started
La Mesa Dale	Construction Start Summer 2024
Rolando	Construction Start Summer 2024
Lemon	Construction Start Fall 2024
Maryland	Construction Start Fall 2024

LMAAC Elementary



- Construction Crews Mobilizing.
- Relocating Utilities in Back of Campus for Underground Utility Work in Summer





Bundle E Construction

Project Site	Status
Parkway	Construction Start Summer 2024
Fletcher Hills	Construction Start Summer 2024
Northmont	Construction Start Summer 2024
Murray Manor	Construction Start Fall 2024

Bundle C and E Construction Documents

- DSA Approvals Imminent
 - Parkway Sports and Health Science Academy
 - Includes New Office Building
 - Portables Relocation (10)
 - Murray Manor Elementary
 - La Mesa Dale Elementary
- DSA Approvals Received
 - Fletcher Hills Elementary
 - Northmont Elementary
 - LMAAC
 - Rolando Elementary
 - Lemon Avenue Elementary
 - Maryland Avenue Elementary



Upcoming Activities

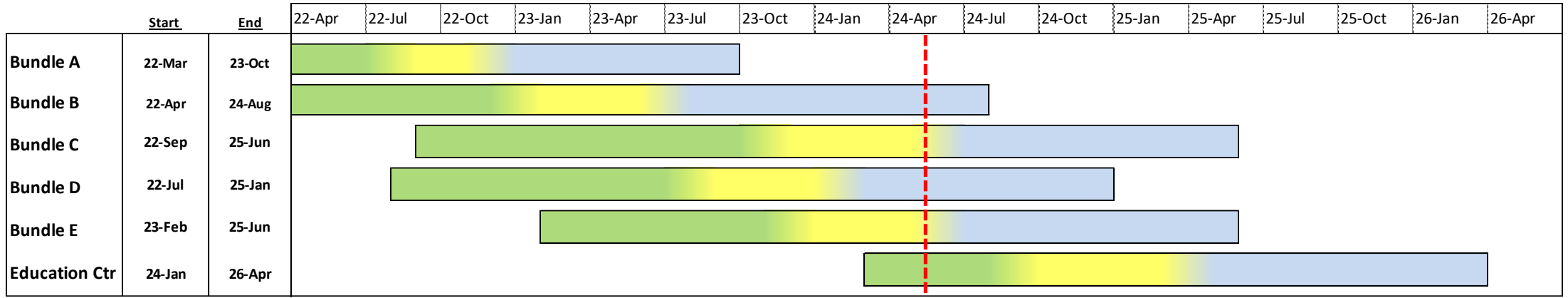
- Bundle B
 - Complete Punch Lists and Project Closeouts
- Bundle D
 - Continue Construction
- Bundle C
 - LMAAC Summer Utility Work Start
 - La Mesa Dale and Rolando Construction Start
 - Lemon Ave and Maryland Ave Construction Planning
- Bundle E
 - Construction Starts All Sites (except Murray Manor)
- Playground Improvement Starts
- Education Center Planning Start



Current Program Financial Summary

Project Name	Original Budget	Current Budget	Budget Changes	Committed Costs	Expenditures	Remaining Budget	% Committed
Avondale Site Improvements	\$2,640,853.53	\$2,168,977.60	(\$471,875.93)	\$2,000,996.05	\$265,324.56	\$167,981.55	92.26%
Bancroft Site Improvements	\$1,893,596.29	\$2,497,829.16	\$604,232.87	\$2,401,990.58	\$217,940.08	\$95,838.58	96.16%
Casa de Oro Site Improvements	\$4,121,685.39	\$3,904,236.87	(\$217,448.52)	\$3,748,497.20	\$3,443,896.33	\$155,739.67	96.01%
Fletcher Hills Elementary School	\$4,142,269.06	\$4,815,479.86	\$673,210.80	\$303,293.76	\$208,082.59	\$4,512,186.1C	6.30%
Highlands Elementary Site Improvements	\$1,602,953.80	\$1,871,531.58	\$268,577.78	\$1,680,681.21	\$1,519,887.01	\$190,850.37	89.80%
Kempton Site Improvements	\$2,676,367.30	\$2,902,162.12	\$225,794.82	\$2,821,401.57	\$283,675.11	\$80,760.55	97.22%
La Mesa Dale Site Improvements	\$8,497,137.87	\$10,153,280.07	\$1,656,142.20	\$3,112,239.32	\$901,626.66	\$7,041,040.75	30.65%
La Presa Site Improvements	\$4,987,447.34	\$4,122,808.71	(\$864,638.63)	\$3,901,302.18	\$382,774.63	\$221,506.53	94.63%
Lemon Avenue Site Improvements	\$1,751,735.70	\$2,146,141.21	\$394,405.51	\$236,373.76	\$170,529.03	\$1,909,767.45	11.01%
Loma Elementary Site Improvements	\$782,071.17	\$1,251,804.75	\$469,733.58	\$1,210,167.37	\$1,087,141.63	\$41,637.38	96.67%
Maryland Avenue Site Improvements	\$1,584,913.59	\$1,669,319.10	\$84,405.51	\$224,968.15	\$157,349.71	\$1,444,350.95	13.48%
Murdock Site Improvements	\$1,659,839.77	\$2,653,103.81	\$993,264.04	\$2,324,796.06	\$2,133,553.42	\$328,307.75	87.63%
Murray Manor Site Improvements	\$2,273,753.02	\$3,273,753.02	\$1,000,000.00	\$188,666.17	\$131,321.08	\$3,085,086.85	5.76%
Northmont Site Improvements	\$5,408,296.52	\$4,751,170.54	(\$657,125.98)	\$425,749.06	\$292,066.23	\$4,325,421.48	8.96%
Rancho Site Improvements	\$2,001,411.81	\$2,136,350.66	\$134,938.85	\$2,049,644.13	\$222,866.78	\$86,706.53	95.94%
Rolando Site Improvements	\$2,755,932.66	\$4,430,338.17	\$1,674,405.51	\$337,617.35	\$238,137.58	\$4,092,720.82	7.62%
Sweetwater Springs Site Improvements	\$5,629,939.77	\$2,778,261.57	(\$2,851,678.20)	\$2,529,076.67	\$2,251,062.75	\$249,184.9C	91.03%
Middle Schools							
Parkway Middle School Entrance Modernizations	\$628,359.69	\$708,585.50	\$80,225.81	\$663,049.00	\$663,049.00	\$45,536.5C	93.57%
Parkway Middle School Improvements	\$16,669,083.19	\$15,307,398.74	(\$1,361,684.45)	\$1,339,033.90	\$879,161.03	\$13,968,364.84	8.75%
La Mesa Arts Academy Entrance Modernizations	\$628,359.70	\$1,080,735.50	\$452,375.80	\$1,033,357.82	\$1,033,357.82	\$47,377.68	95.62%
La Mesa Arts Academy Site Improvements	\$5,568,238.99	\$3,889,258.38	(\$1,678,980.61)	\$3,156,506.53	\$594,374.22	\$732,751.85	81.16%
Spring Valley Academy Entrance Modernizations	\$628,359.69	\$818,873.50	\$190,513.81	\$753,819.37	\$753,819.38	\$65,054.13	92.06%
Spring Valley Academy Site Improvements	\$3,389,591.21	\$3,249,384.21	(\$140,207.00)	\$2,991,215.07	\$2,641,105.48	\$258,169.14	92.05%
STEAM Academy Entrance Modernizations	\$628,359.69	\$1,487,264.50	\$858,904.81	\$1,455,781.36	\$1,455,781.37	\$31,483.14	97.88%
STEAM Academy Site Improvements	\$4,621,369.51	\$5,655,411.53	\$1,034,042.02	\$5,476,115.14	\$381,537.15	\$179,296.39	96.83%
Other District Sites							
STEAM Slope Stabilization	\$6,606,524.75	\$6,560,840.70	(\$45,684.05)	\$2,372,097.00	\$2,343,594.25	\$4,188,743.7C	36.16%
Infrastructure Repairs - Districtwide	\$6,443,178.98	\$1,589,574.98	(\$4,853,604.00)	\$0.00	\$0.00	\$1,589,574.98	0.00%
Playground Improvements		\$4,853,604.00	\$4,853,604.00	\$703,558.26	\$204,202.22	\$4,150,045.74	14.50%
Energy Efficiency Projects - Districtwide	\$10,371,056.42	\$10,371,056.42	\$0.00	\$10,371,056.42	\$10,371,056.42	\$0.00	100.00%
Security Fencing		\$832,540.63	\$832,540.63	\$773,621.86	\$773,389.36	\$58,918.77	92.92%
Operations Center							
Operations Center Trailer Demolition	\$65,252.63	\$150,732.64	\$85,480.01	\$150,732.64	\$150,732.64	\$0.00	100.00%
Portable Building	\$329,545.99	\$92,655.75	(\$236,890.24)	\$92,655.75	\$92,655.75	\$0.00	100.00%
Operations Center Site Improvements	\$1,908,207.11	\$2,814,767.78	\$906,560.67	\$2,764,996.36	\$1,417,340.89	\$49,771.42	98.23%
Education Service Center							
Education Center Site Improvements	\$6,248,616.17	\$6,248,616.17	\$0.00	\$0.00	\$0.00	\$6,248,616.17	0.00%
Program Common Costs & Contingencies							
Program Administration	\$9,855,691.69	\$7,560,922.64	\$0.00	\$3,260,928.79	\$2,768,470.25	\$4,299,993.85	43.13%
Program Contingency	\$3,000,000.00	\$3,362,649.00	\$362,649.00	\$0.00	\$0.00	\$3,362,649.00	0.00%
Program Reserve	\$4,000,000.00	\$4,000,000.00	\$0.00	\$0.00	\$0.00	\$4,000,000.00	0.00%
Program Totals	\$136,000,000.00	\$138,161,421.37	\$2,161,421.37	\$66,855,985.86	\$40,430,862.41	\$71,305,435.51	48.39%

Schedule



Design
 DSA & Bidding Award
 Construction & Closeout
 Current Date

Local Labor Participation (BBC)

Company	City	County	Bundle A	Bundle B & Ops Center	Total
Casper Company	Spring Valley	San Diego County		525,000	525,000
Brady Company	La Mesa	San Diego County	1,070,268	787,000	1,857,268
ACCO Engineered Systems	San Diego	San Diego County		1,650,000	1,650,000
Western Rim	Escondido	San Diego County	750,000	2,300,000	3,050,000
Inline Fence & Rail Company	Lakeside	San Diego County		2,150,000	2,150,000
FenceCorp	Oceanside	San Diego County		830,000	830,000
Pierre Landscaping	San Diego	San Diego County	255,000	390,000	645,000
South Bay Fence	Chula Vista	San Diego County	60,000		60,000
Kirk Paving	Lakeside	San Diego County		472,000	472,000
Ace Electric	San Diego	San Diego County		290,000	290,000
Precision Electric	Lakeside	San Diego County	210,000	564,000	774,000
Elite Earthworks	Murietta	Out of County	1,800,000		1,800,000

Local Labor Participation (Lusardi)

Company	City	County	Bundle D
XYZ Consulting, Inc.	San Diego	San Diego County	121,500
Cement Cutting, Inc.	San Diego	San Diego County	703,428
Johnston Tractor, Inc.	Alpine	San Diego County	431,840
HSCC, Inc.	Lakeside	San Diego County	1,711,564
New Dimension Masonry, Inc.	San Diego	San Diego County	159,244
West Coast Iron, Inc. WCI	Spring Valley	San Diego County	445,744
Sylvester Roofing Company, Inc.	Escondido	San Diego County	17,000
Brady West, Inc.	La Mesa	San Diego County	105,500
MC Painting aka MC Contracting	Oceanside	San Diego County	158,765
Premier Sign Service, Inc.	Riverside	Riverside County	318,040
Western Sign & Awning	San Marcos	San Diego County	83,910
Nicholas De Graaf dba Pacific Flagpole Service	San Diego	San Diego County	61,995
Strelic Plumbing Inc. DBA Advance Plumbing Company	El Cajon	San Diego County	521,240
Brian Cox Mechanical, Inc. BCM	Poway	San Diego County	2,417,016
Ace Electric, Inc.	San Diego	San Diego County	651,635
RAP Engineering, Inc.	San Marcos	San Diego County	195,548
Team West Contracting Corporation	Corona	Riverside County	2,018,975
Pierre Landscape	Irwindale	Los Angeles County	717,608



Measure V Bond Program Update

Questions.....